

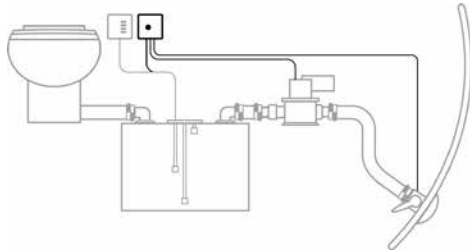
SeaLand® DTD Series Tank Discharge Controls

Allows manual or automatic discharge pump operation

DTD Tank Discharge Controls

Where overboard discharge of a waste holding tank is permitted, SeaLand DTD controls offer many options to match preferred methods of tank discharge operation. A key-operated switch allows the user to activate the discharge pump, or set the DTD panel for semi- or fully-automatic operation, depending on the DTD model. All panels include a green light that indicates when the discharge pump is running. DTD controls can be used with a discharge pump operating on the same voltage and a maximum circuit rating of 20 amps.

- Key Benefits – DTD01, DTD02**
- Manually activates pump to discharge holding tank contents directly overboard in unrestricted waters
 - Green light indicates when discharge pump is running; reminds operator to shut off pump to prevent burn-out
 - Keyed switch provides U.S. Coast Guard-approved security when key is removed; no padlocks or other mechanical fasteners are required
 - When integrated with DTM04 tank monitor system, discharge pump automatically shuts off when tank is empty
 - DTD02 panel provides warning indicator and prevents discharge pump operation if seacock is closed; prevents pump or boat damage



DTD01 control options

A. Manual discharge pump operation.

B. Semi-automatic operation when connected to DTM04 tank monitor system – automatically turns discharge pump off when tank is empty (see below).

- When DTM04 monitor indicates “full” holding tank, insert key in switch and turn to momentary “start” position. Allow key to return to “on” position. Green light indicates pump is running.
- When tank monitor indicates “empty”, discharge pump will turn off automatically. Turn key to left and remove from switch.

DTD02 control options

A. Manual discharge pump operation and “closed seacock” warning indicator.

B. Semi-automatic operation when connected to DTM04 tank monitor system – automatically turns discharge pump off when tank is empty (see below).

- When DTM04 monitor indicates “full” holding tank, insert key in switch and turn to momentary “start” position. If seacock is closed, the yellow warning light illuminates.
- Open seacock for overboard discharge. Turn key to momentary “start”, and allow key to return to “on” position. Green light indicates pump is running.
- When tank monitor indicates “empty” discharge pump will turn off automatically. Close seacock, then turn key to left and remove from switch.

Fully Automatic SeaLand® DTD Systems

Complete holding tank management for offshore boats

Combined with SeaLand discharge pump and DTM04 four-level tank monitor system (sold separately), DTD01A or DTD02A tank discharge controls offer fully automated monitoring and discharge of holding tank contents. When re-entering restricted “no discharge” waters, the switch can be turned off and the key removed for U.S. Coast Guard-approved security.

DTD01A discharge control



DTD02A discharge control with seacock warning light



DTD Panel Dimensions – all models
3.25 in. w x 3.25 in. h / 83 mm x 83 mm

Key Benefits – DTD01A, DTD02A

- Automatically discharges holding tank contents directly overboard in unrestricted waters
- Automatically shuts off pump when discharge is complete
- DTD02A panel provides warning indicator and prevents discharge pump operation if seacock is closed; prevents pump or boat damage

DTD Series Electrical Current Draw

	DTD01	DTD02	DTD01A	DTD02A
12V DC	0.16 A	0.16 A	0.16 A	0.16 A
24V DC	0.095 A	0.095 A	0.095 A	0.095 A

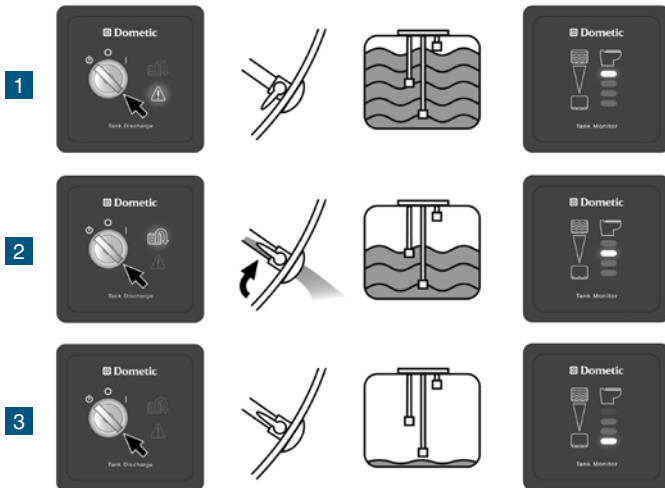
DTD draws electrical current only when discharge pump light or seacock warning light is illuminated.
Maximum relay rating for 12V or 24V DC discharge pump: 20 amps.
Float switch rating: 20 watts with resistive load (when used with DTM04 tank monitor system).
Specifications subject to change without notice.

Seacock interlock switches

DESCRIPTION	ITEM
Seacock interlock relay and switch for Conbraco 7014701	385310651
Seacock interlock relay and switch for Groco	385310705
Seacock interlock relay for Groco FBV1500	385010002

DTD01A* and DTD02A control options

- Manual discharge pump operation and “closed seacock” warning indicator.
- Fully-automatic operation when connected to DTM04 tank monitor system and SeaLand discharge pump (see below).
 - When in open waters and automatic pump-out is desired, insert key and turn to automatic power position. If seacock is closed, the yellow warning light illuminates.
 - Open seacock for overboard discharge. As holding tank fills and a “mid” level is reached, discharge pump is activated. Green light indicates pump is running.
 - When effluent level activates “empty” tank probe, discharge pump automatically stops.



* “Closed seacock” warning indicator functions do not apply to DTD01A.

DTD Controls Product Information

MODEL	DESCRIPTION	PANEL COLOR	V DC	ITEM
DTD01	Discharge pump control panel; manual or semi-auto* operation	black	12	313814101
			24	313814103
DTD02	Discharge pump control and seacock warning panel; manual or semi-automatic* operation	black	12	313814201
			24	313814203
DTD01A	Discharge pump control panel; manual or fully automatic* operation	black	12	313814301
			24	313814303
DTD02A	Discharge pump control and seacock warning panel; manual or fully automatic* operation	black	12	313814401
			24	313814403

* When used in combination with DTM04 tank monitor system.
Specifications subject to change without notice.